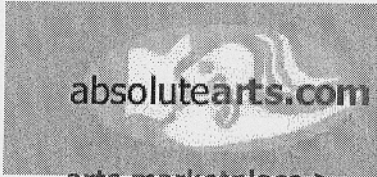


account access login: password: artist port. gallery port.



[submit your arts news](#) | [media kit](#) | [about us](#) | [s](#)



[arts marketplace >](#) [artist portfolios >](#) [gallery portfolios >](#) [arts news >](#)

Indepth Arts News:

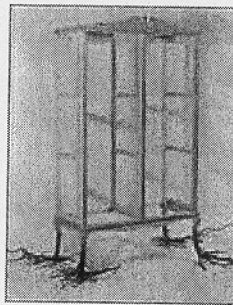
"El real viaje Real / The Real Royal Trip"

2003-10-12 until 2004-01-05

PS1 Contemporary Art Center

Long Island City, NY, USA United States of America

P.S.1 Contemporary Art Center presents El real viaje Real / The Real Royal Trip, the world premiere of a touring exhibition that explores Spanish and Latin American art in the context of the international contemporary art world. Organized by renowned Swiss-born curator Harald Szeemann, El real viaje Real / The Real Royal Trip takes its historical reference from Christopher Columbus's fourth journey to the New World, in which he traveled to islands of the Caribbean and the coast of Latin America.



The contemporary artists in the exhibition are from Columbus's embarkation point, Spain, and the lands he explored, including Cuba, Costa Rica, and Brazil. El real viaje Real / The Real Royal Trip, which is accompanied by a bilingual catalogue, is presented first in New York and will travel to Museo Patio Herreriano in Valladolid, Spain. The exhibition will present work by 22 artists, 13 of whom are being exhibited in the United States for the first time.

Harald Szeemann views this exhibition as the real royal trip: El real viaje Real / The Real Royal Trip is a celebration of art, pleasure, and adventure. Columbus embarked on his fourth transatlantic journey, the Royal Trip (1502-04), with the support of the Catholic Kings, Queen Isabella and King Ferdinand. From the outset, however, the journey was plagued by conflict and difficulty. Nevertheless, the contact between Spain and America that Columbus initiated eventually led to great transcultural exchange.

The artists included in this exhibition of painting, sculpture, photography, video, and installation are Antoni Abad (b. 1956, Lleida, Spain), Ana Laura Aláez (b.1964, Bilbao, Spain), Pilar Albarracín (b. 1968, Sevilla, Spain), Tania Bruguera (b. 1968, Havana, Cuba), Carlos Congost (b. 1970, Girona, Spain), Justo Gallego (b.1925, Mejorada del Campo, Spain), Carmela García (b. 1964, Lanzarote, Spain), Alicia Martín (b. 1964, Madrid, Spain), Enrique Marty (b. 1969, Salamanca, Spain), Mateo Maté (b. 1964, Madrid, Spain),

this week in the ar

Ads by Google

Buy Modern Art Direct

Affordable, contemporary paintings on canvas. UK based artist
www.janolive.co.uk

All of Yo Daidone Montella

Jan Dun

Philip Br Art Galler

Drawing America Gallery

Monica Marcu

Botanical & nature photographs
Worldwide delivery.
14 day approval
www.totallyessential.com

Artadia: 2004 - m

Call To S Notice to Dealers, Internat

Auction

Limited Edition Art

Make art part of your life with our paintings, sculptures and glassware
www.artforlife.co.uk

Anxiety Surreali: 1930-19 Museum

Danny S State Gal

Winard ! In The E Note - Br

Light Emitting Diode Art

Art work with Light Emitting Diode with electronic music by Teddy Lo
www.LEDartist.com

Biennial Art Take Meta Ba Director

Brilliant: Lighting Museum

Lee Milk an Incre Gallery fc Photogra

Call for / Galleries: Art, Fast Internatik

Priscilla Monge (b. 1968, San José, Costa Rica), Ernesto Neto (b. 1964, Rio de Janeiro, Brazil), Sergio Prego (b. 1965, Bilbao, Spain), Cristina García Roderó (b. 1949, Puertollano, Spain), Fernando Sánchez Castillo (b. 1970, Madrid, Spain), Santiago Sierra (b. 1966, Madrid, Spain), Néstor Torrens (b. 1954, Tenerife, Spain), Eulalia Valldosera (b. 1963, Barcelona, Spain), Javier Velasco (b. 1963, Seville, Spain), and El Perro (an artists collective composed of Ramón Mateos, Iván López, and Pablo España).

El real viaje Real / The Real Royal Trip is Mr. Szeemann's first exhibition that originates in the United States. From 1961 to 1969, he was Director of the Kunsthalle Bern. He served as the Artistic Director of Documenta 5 (1972), co-organized the Venice Biennale in 1980, and initiated the Biennale's Aperto exhibitions of emerging artists. Mr. Szeemann was a curator at Kunsthaus Zürich from 1981 to 2000, and returned to Venice to serve as the Director of Visual Arts of the Biennale from 1998-2002. Mr. Szeemann has also organized exhibitions in venues as diverse as a former stable in Vienna, the Salpêtrière hospital in Paris, and the Cristal Palace in the Retiro Park in Madrid.

El real viaje Real / The Real Royal Trip is curated by Mr. Szeemann, with Associate Curator Christian Dominguez and P.S.1 Curator Jimena Blázquez. The Exhibition Coordinator is Marta Rincón with Coordination assistant, Eduardo García. P.S.1 International Exhibition Advisor is Antoine Guerrero and P.S.1 Director of Installation is William Norton. The Project Manager is Jeffrey Uslip.

IMAGE

Mateo Maté
Echar raíces Sculpture

Related Links:

Indepth Arts Resources for the State of New York

Other Important Exhibitions in New York

Quick Arts Access:

Brooklyn (136)
Ithaca (23)
New York (1085)
Rochester (34)

indepth arts search:

Select A Database

[Free Arts News Subscription](#) | [Browse the Arts](#) | [Artist Portfolios](#) | [International Arts News](#) | [Arts News Archiv](#)

New Bal
- Perth Ir
Contemp

The Fem
Group E
Universit

Joy of Li
Photogr
Hara Mus
Art

El Greco
National

Janet Ca
Bures Mi
Sheffield
Trust, Mil

Painting
Don O'Me

Call for
Coloquic
Arte Dig
Internat
Exhibit
Centro Ci
Torriente

arts search